

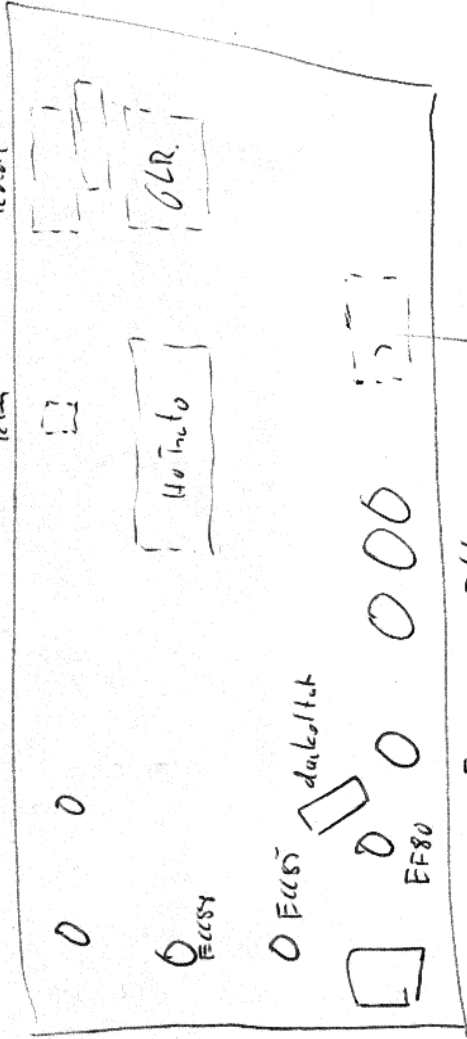
Von Otr

Fr 7 A

0A150 ECF80

Prossol  
lehm

120  
leudi



Dross. 50uA

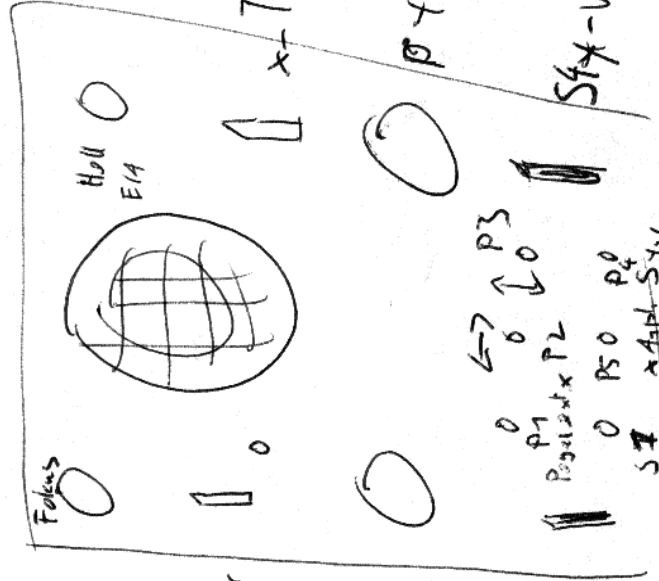
ET-Indu  
H2h

ECS2 ECS3

S-Ecksparner

Px Fern

Sx Abblu



Folias

Holl  
E14

S-Ecksparner

x-Teiler

Px Fern

Px Fern

Sx-Vertäler

P1  
P2  
P3  
P4  
P5  
P6  
S7  
Dross. 50uA

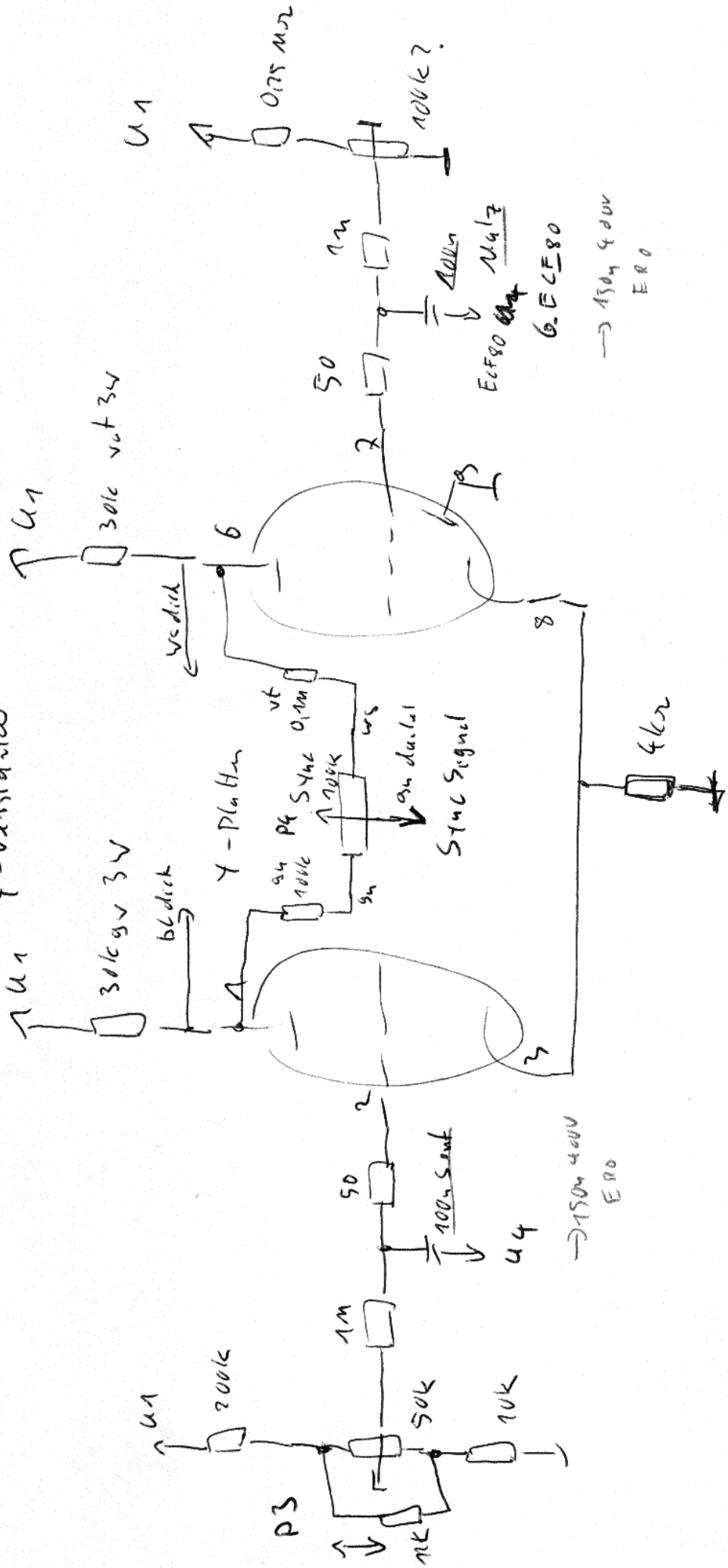
Ssync

Int/Ext/Ext x



ECC85

Y-Verstärker



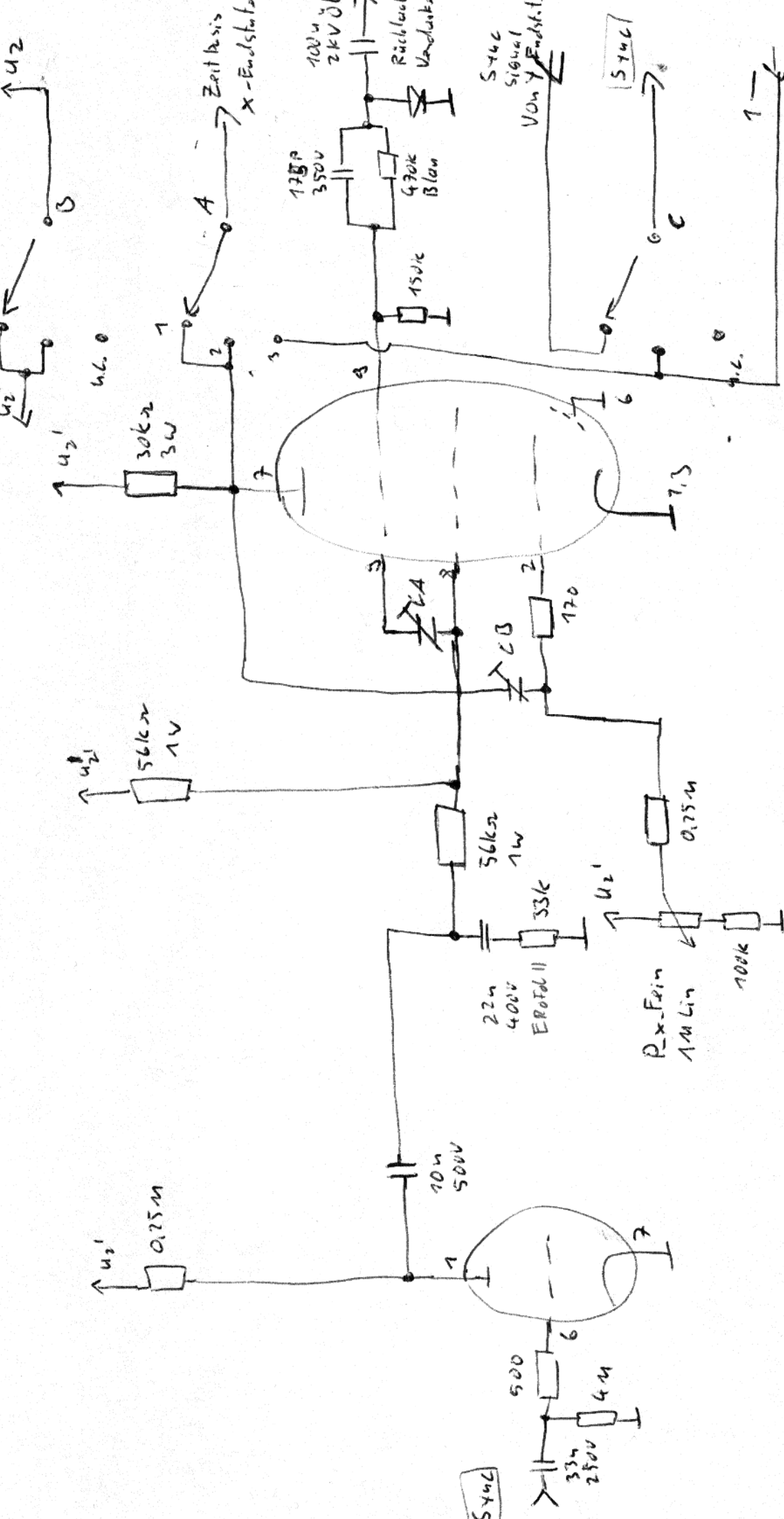
EL92

Kippgenerator

EF80

St-Sync-Dst.

Zeitbasis  
X-Endstufe



1  
2 St-Sync  
3 ext. X

St-Sync

u<sub>z1</sub>

u<sub>z1</sub>

u<sub>z1</sub>

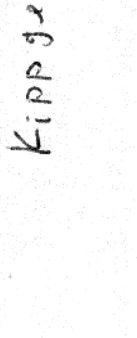
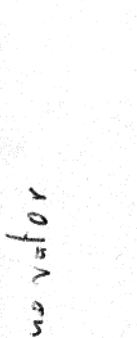
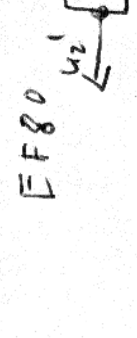
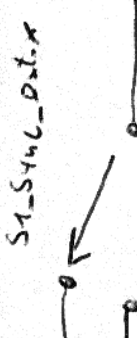
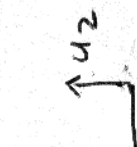
u<sub>z1</sub>

u<sub>z1</sub>

u<sub>z1</sub>

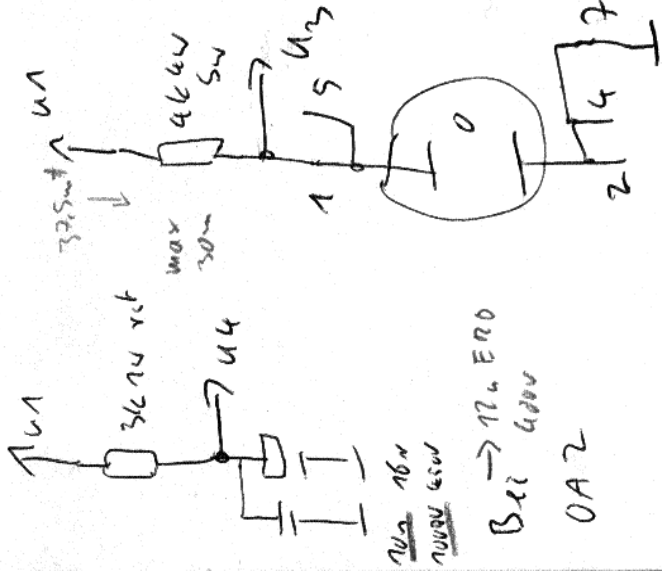
u<sub>z1</sub>

u<sub>z1</sub>



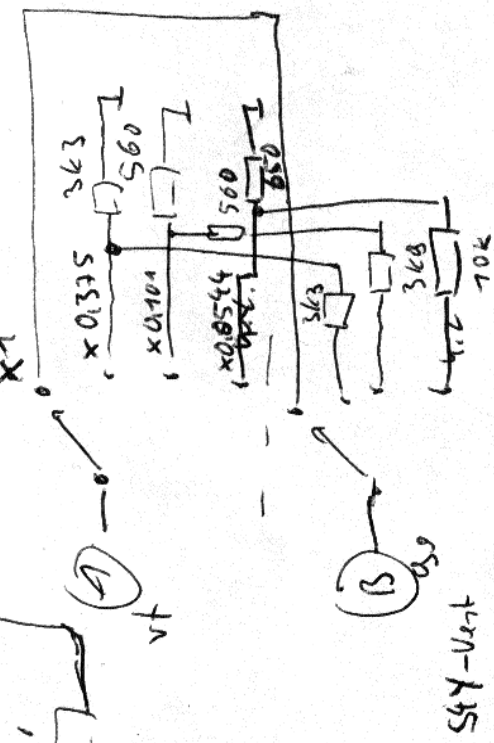
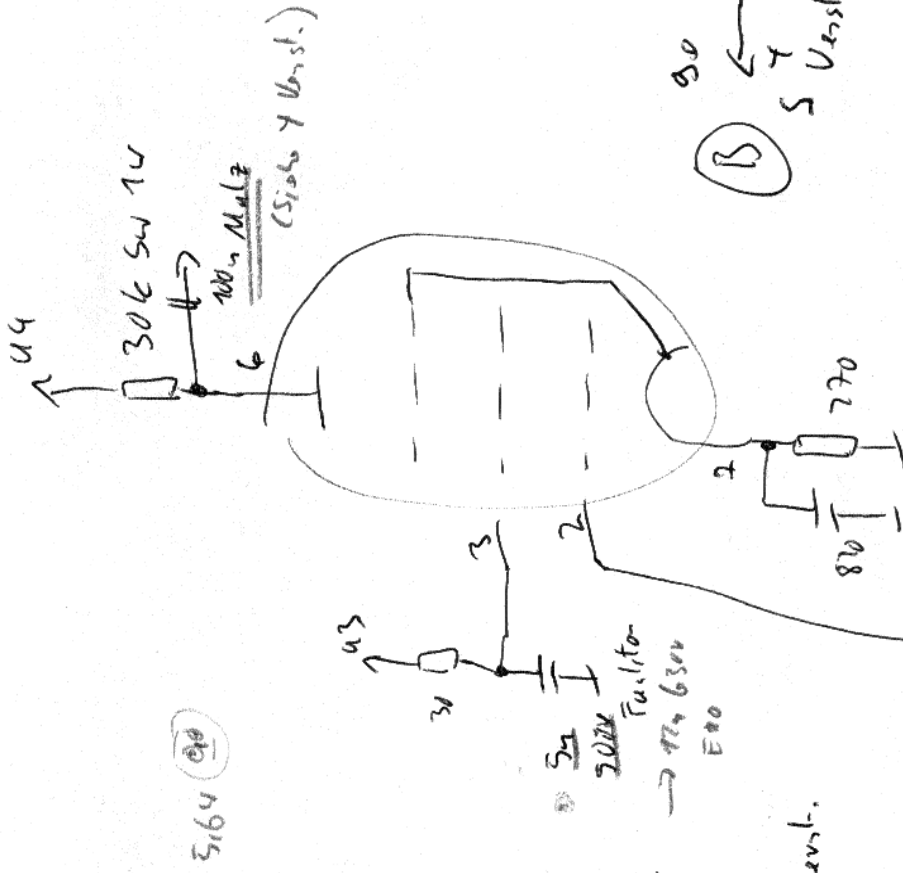


OA150

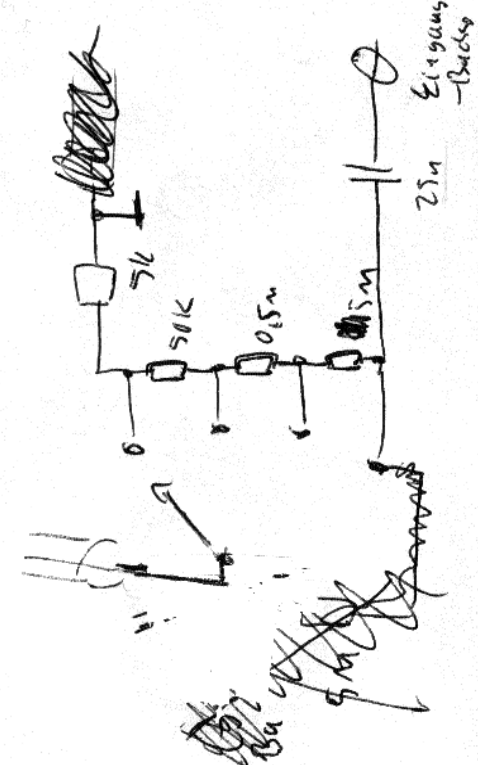
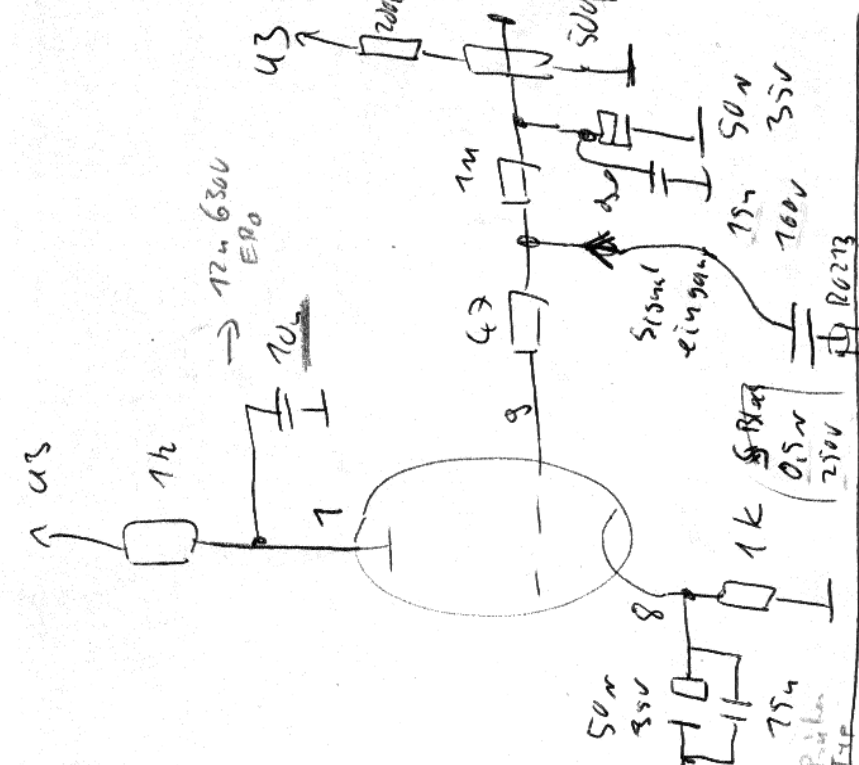


ECERO

Ein gangs Verstärker



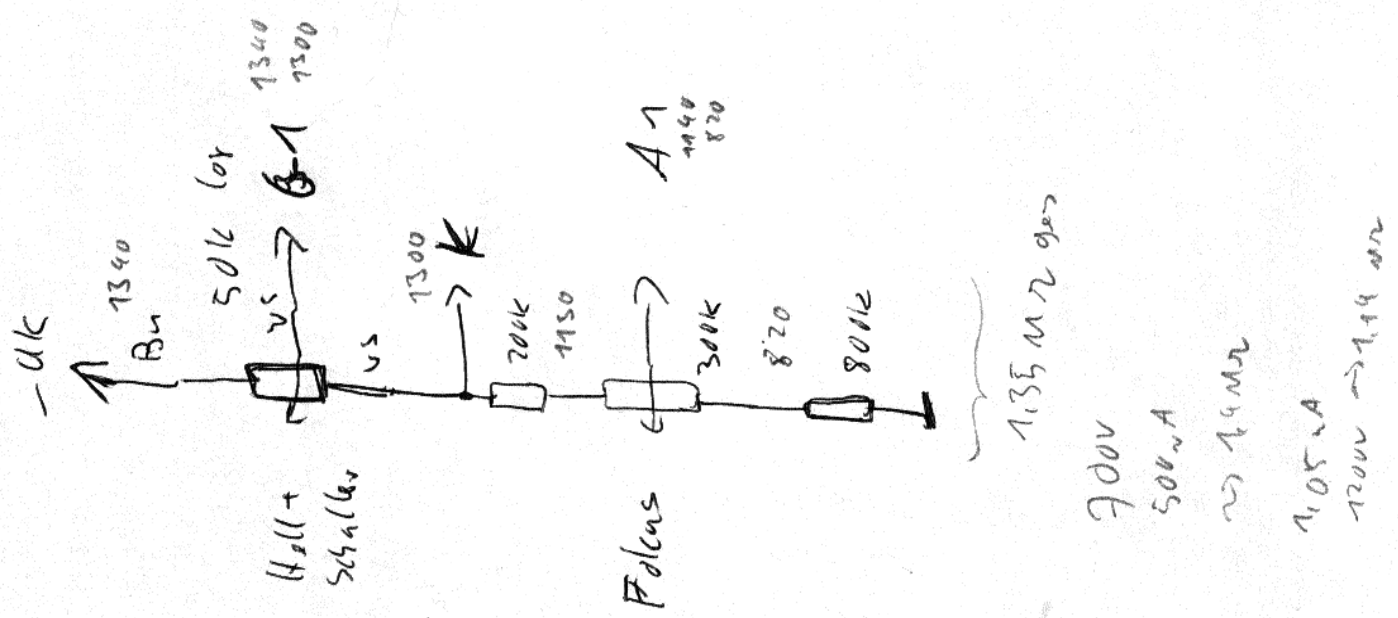
PT Fern



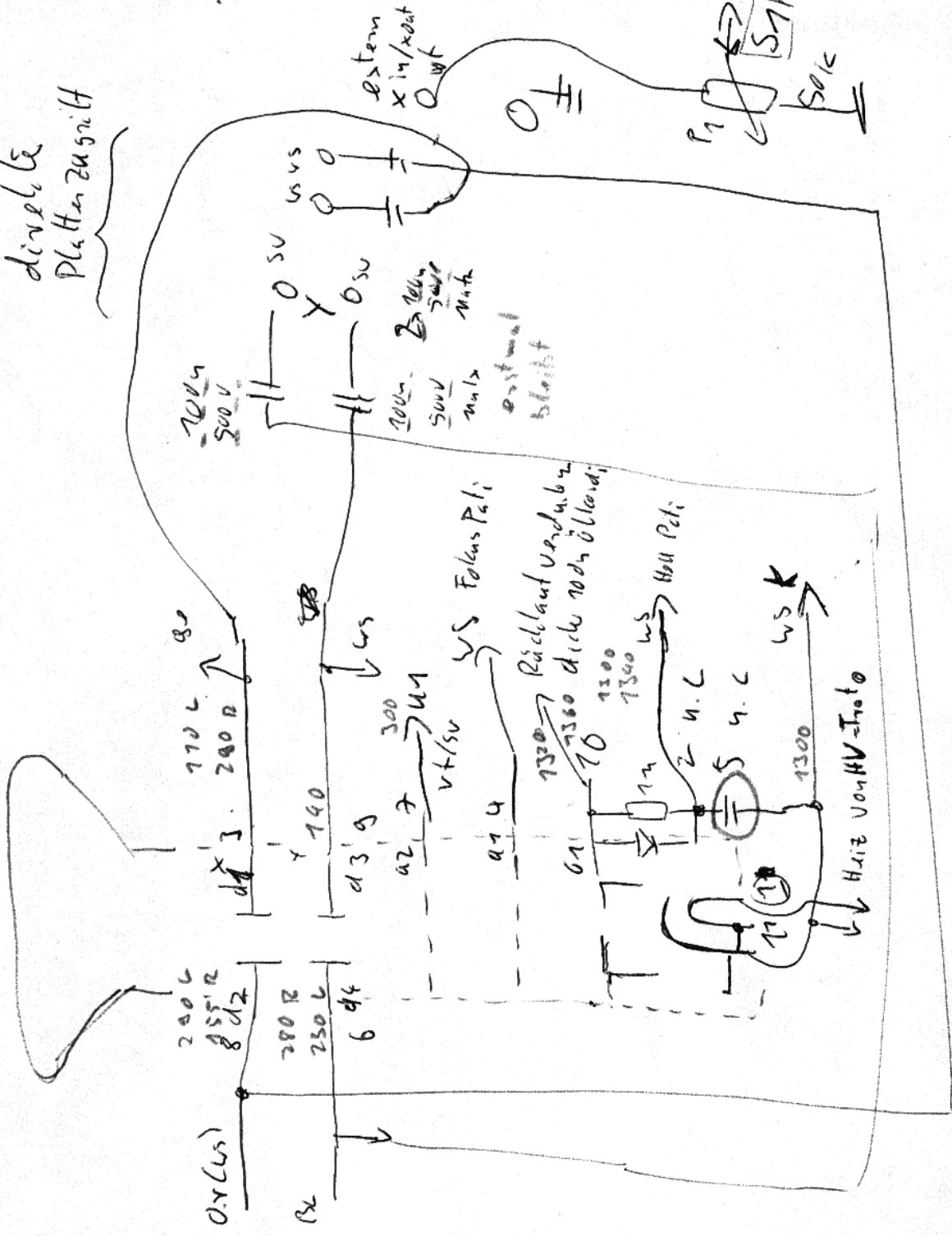
Ein gangs - Backe



Bildröhrenbeschaltung



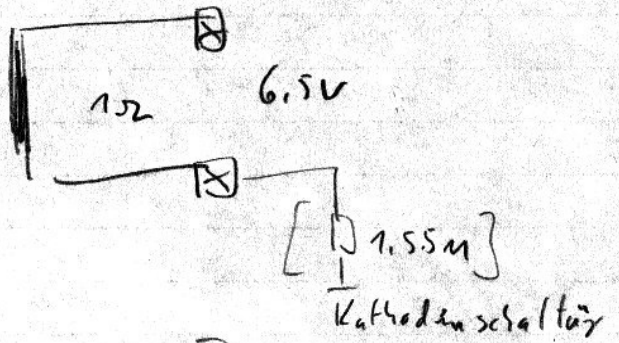
diverse  
Plattenzugriff



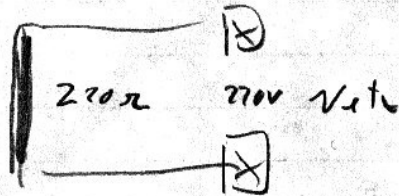


Bildröhren  
Hv-Trafo

Heißeitig  
geerdet

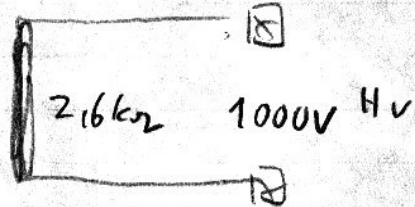


Leistung  $\approx 10\text{mA}$   
500V

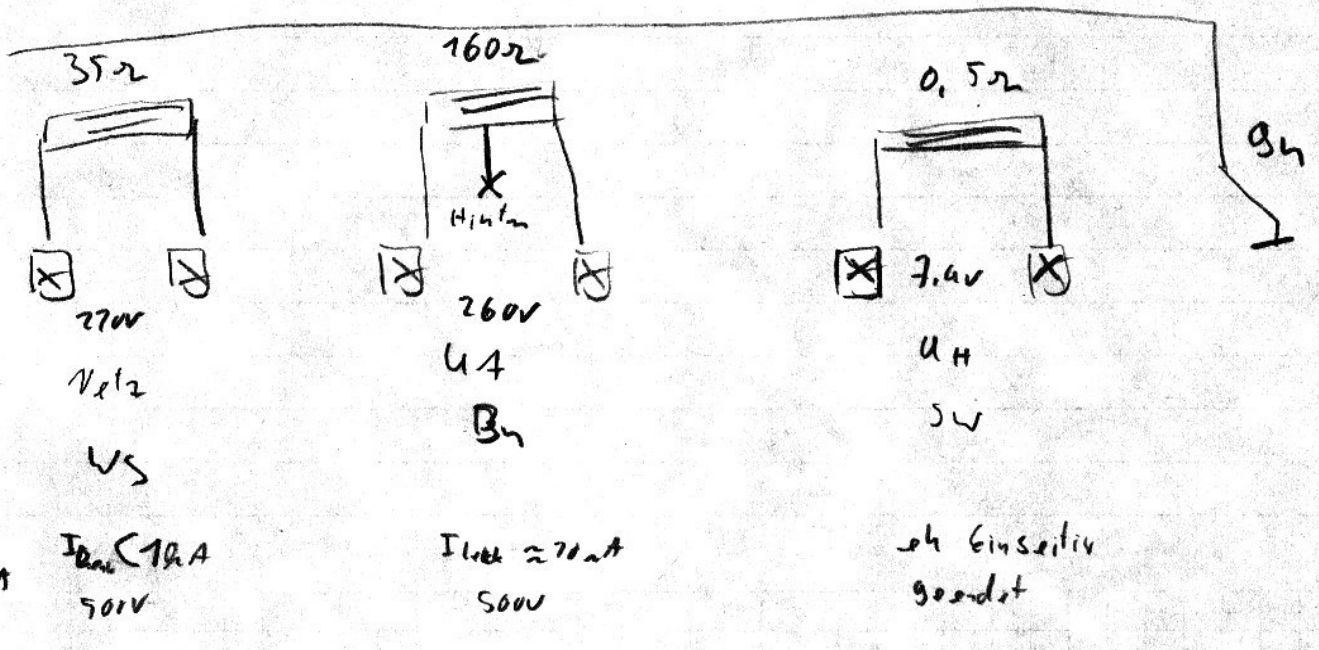


270V  
72mA  
16VA  
7.7V

Beidseitig  
geerdet



Heiz- / Betriebs trafo



270V  
70mA  
15.4VA  
2.8W

$I_{\text{Heiz}} < 1\text{mA}$   
501V

$I_{\text{Hv}} \approx 70\text{mA}$   
500V

Hv einseitig  
geerdet