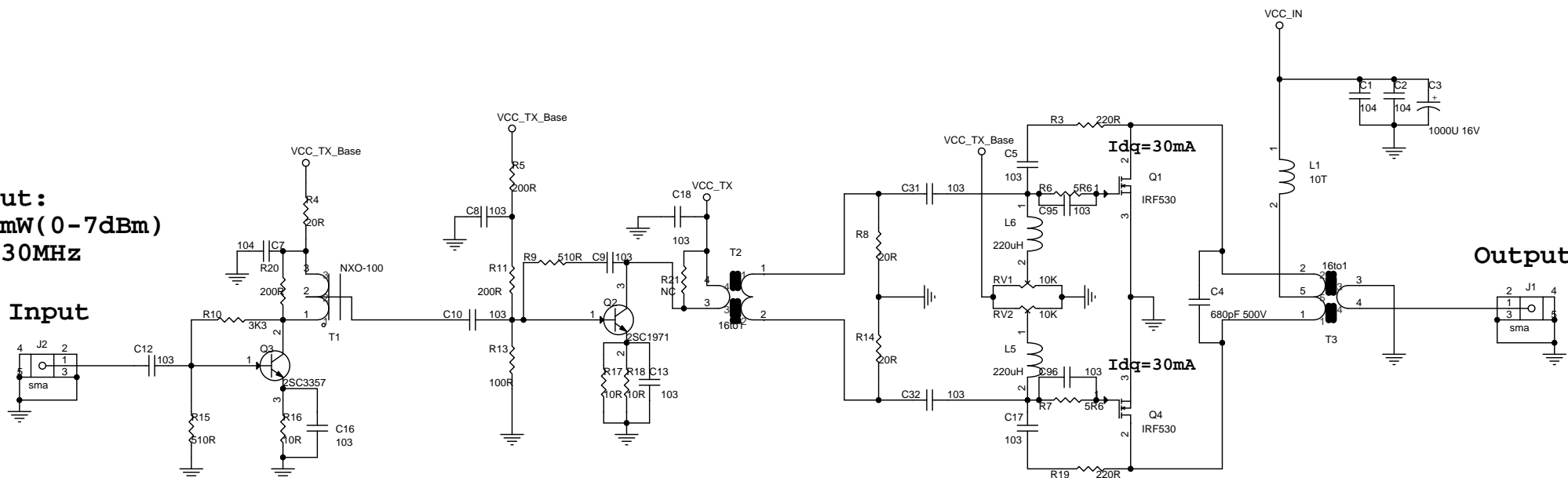


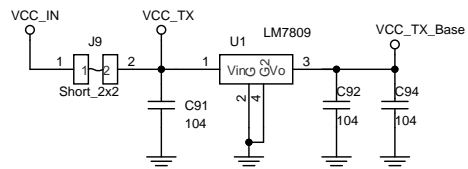
Input:
1-5mW (0-7dBm)
@3-30MHz

Input



POWER
DC 12-15V @10A

Output



A10
3.5mm_8via
DG

A9
3.5mm_8via
DG

A1
3.5mm_8via
DG

A2
3.5mm_8via
DG

A3
3.5mm_8via
DG

A8
3.5mm_8via
DG

Title		
RF-AMP-2078		
Size	Document Number	Rev
B	<Doc>	V305
Date:	Thursday, January 28, 2016	Sheet 1 of 1